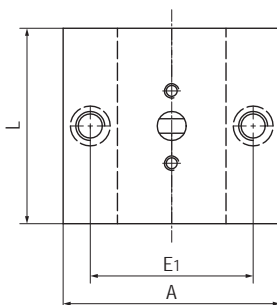
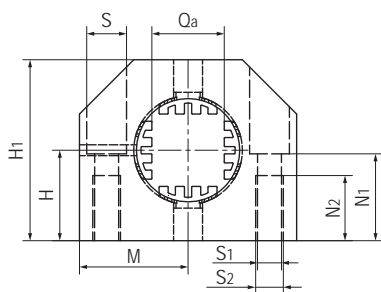


## LIN-12QB 塑料直线轴承座 Plastic linear pillow blocks



- 封闭式短型枕块设计
  - 装配LIN-12Q滑动膜
  - 阳极氧化铝合金适配器
  - 承受扭矩高达 5 Nm
  - 免维护、低噪音
  - 适用于污垢或灰尘环境
  - 使用温度-50℃/+90℃
- Closed and short block design
  - Assembled LIN-12Q liners
  - Anodized aluminum adapter
  - Torque absorption up to 5 Nm
  - Maintenance-free and low noise
  - Resistance to dirt and dust
  - Operation temperature -50℃/+90℃

## 标准规格 Standard specifications



产品编码 Part No.:

LIN-12QB-20

内孔尺寸 Inner dimension

短型设计滑块 Short design block

LIN-12Q 标准滑动膜  
Standard liners LIN-12Q

产品编码 Part No.	Qa [mm]	H [mm]	H <sub>1</sub> [mm]	A [mm]	M ± 0.02 [mm]	E <sub>1</sub> [mm]	S [mm]	S <sub>1</sub> [mm]	S <sub>2</sub> [mm]	N <sub>1</sub> [mm]	N <sub>2</sub> [mm]	L [mm]
LIN-12QB-20	20	27	54	62	31	48	11	6.6	M8	26	18	40

产品编码 Part No.	内孔尺寸 Inner dimension [mm]	F max. [N] 最大动载荷 Dynamic Load P=5MPa	F max. [N] 最大静载荷 Static Load P=35MPa	最大扭矩 Max. torque [Nm]	重量 Weight [g]
LIN-12QB-20	20	1600	11500	5	250